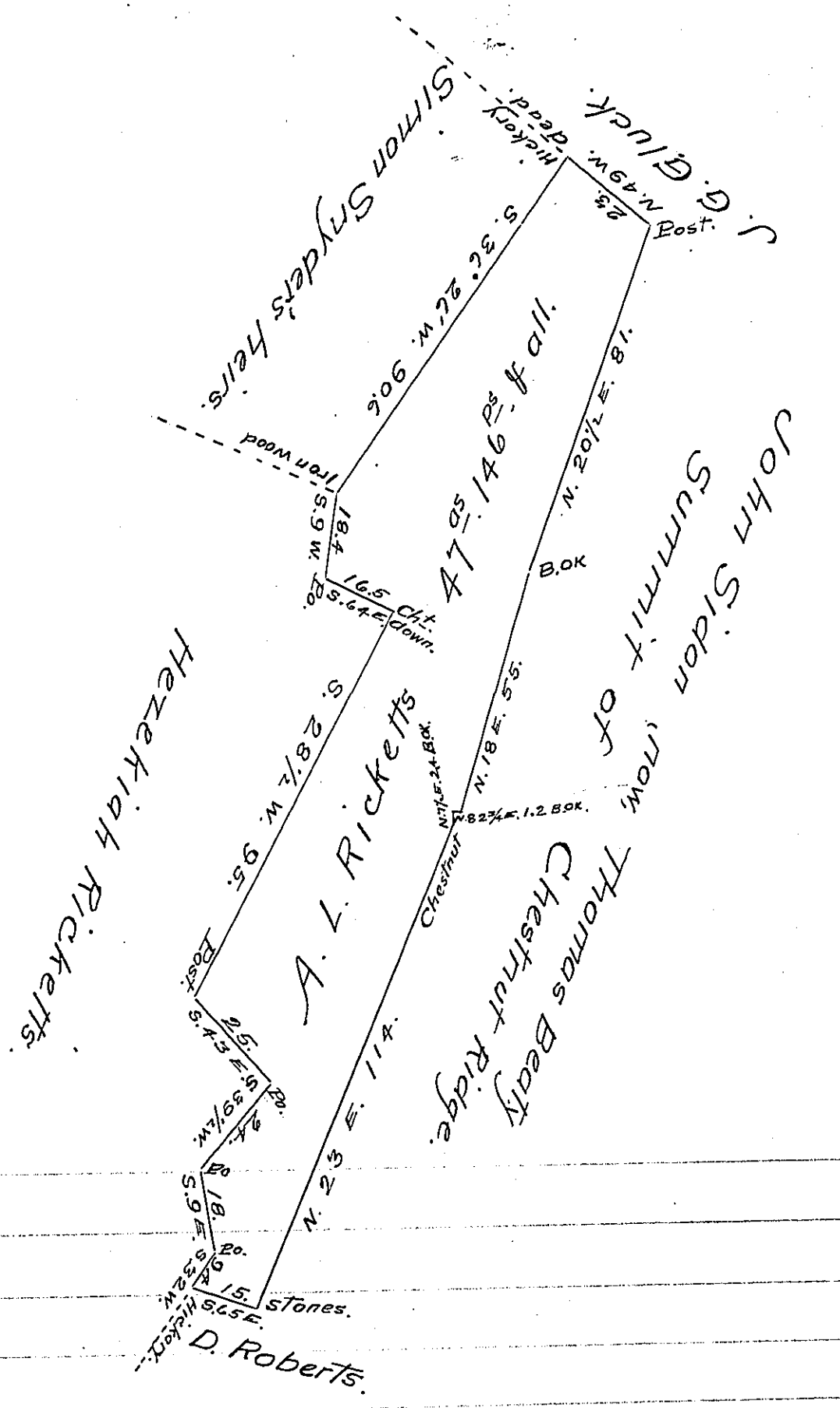


FORM NO 1.



Situate on Chestnut Ridge in Shirley township
 Huntingdon County, containing forty seven acres one
 hundred and forty six perches and the allowance of
 six pr. cent for Roads &c. Surveyed June the 5th A.D. 1857
 In pursuance of a warrant granted to A. L. Ricketts
 dated the 16th day of Feb. A. D. 1857 for 67⁹⁵ 93 P^{rs}.
 To John Rowe Esq. J. F. Ramsey
 Surveyor General. County Surveyor

IN TESTIMONY that the above is a copy of the original remaining on file in
 the Department of Internal Affairs of Pennsylvania, made
 conformably to an Act of Assembly approved the 16th day of
 February, 1833, I have hereunto set my Hand and caused
 the Seal of said Department to be affixed at Harrisburg,
 this Twenty seventh day of November 1907.

Henry Horck
 Secretary of Internal Affairs.